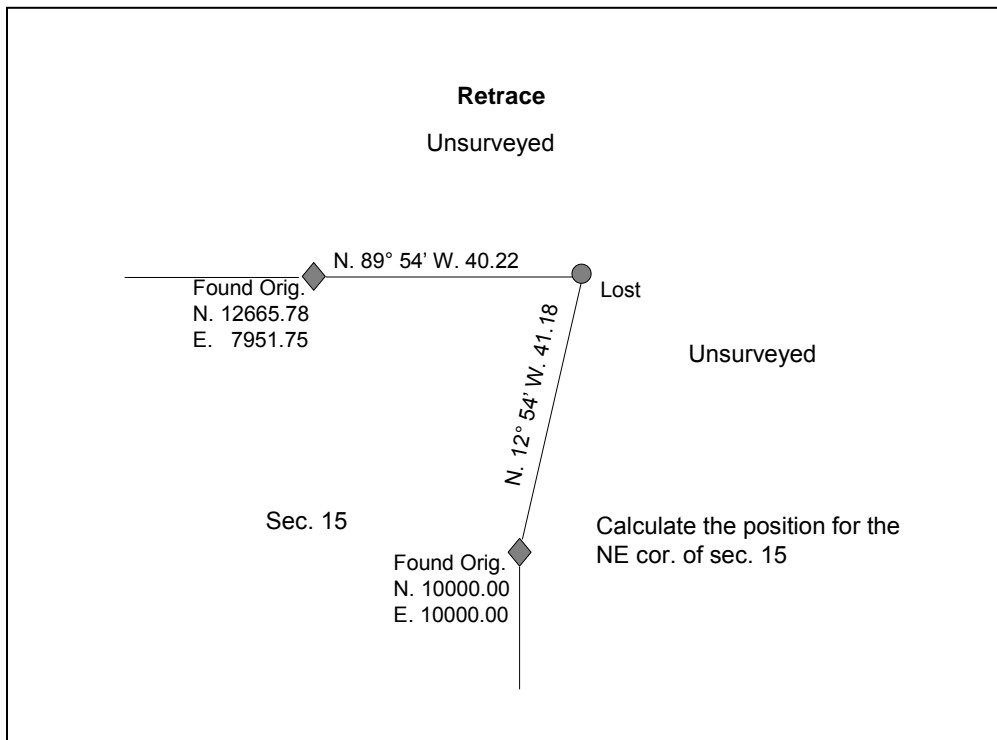
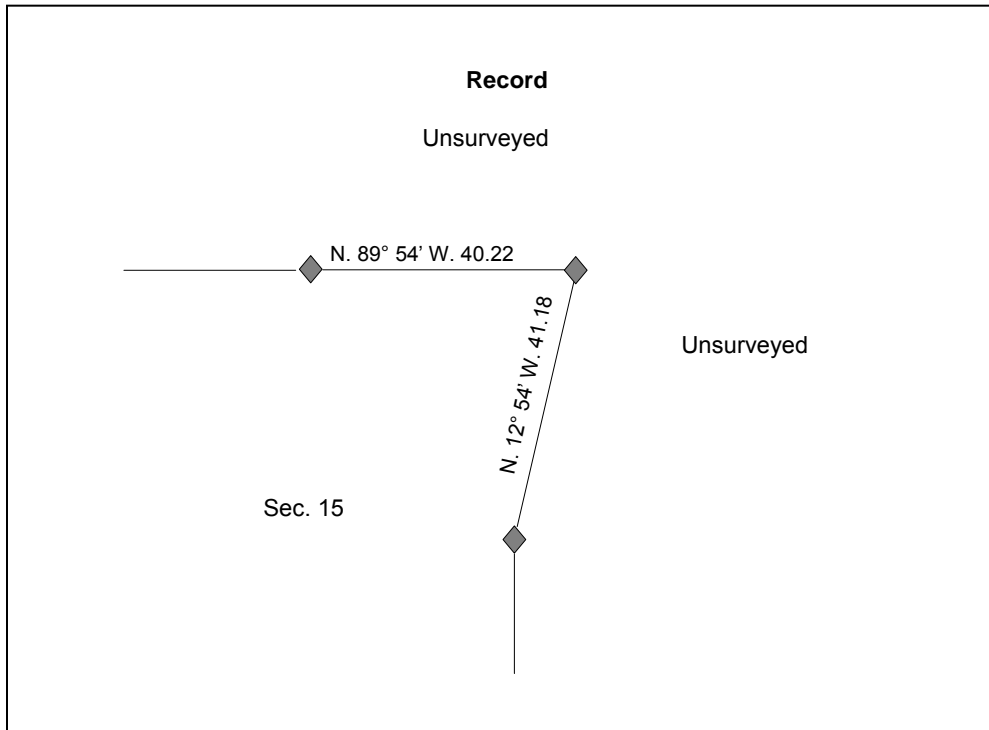


## Two Point



**Calculate N-S**

Record latitude:  $\cos 12^\circ 54' \times 2717.88 \text{ ft. (41.18 chs.)} = 2649.28 \text{ ft.}$

$N.10000.00 + \text{Record Latitude} = \text{Proportionate latitude for the corner}$   
 $N.10000.00 + 2649.28 = \mathbf{N.12649.28}$

**Calculate E-W**

Record departure:  $\sin 89^\circ 54' \times 2654.52 \text{ ft. (40.22 chs.)} = 2654.52 \text{ ft.}$

$E. 7951.75 + 2654.52 = \mathbf{E.10606.27}$

**Proportionate Position of the Section Corner**

**N.12649.28**

**E.10606.27**

